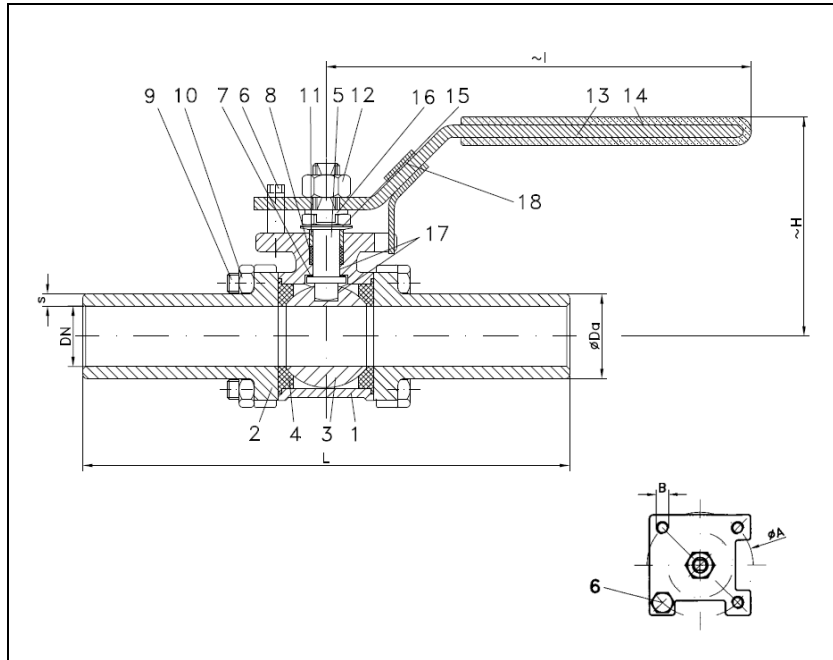


BALL VALVES RK-PROBALL

KH 3T SV (NC), 1/2" - 4", PN63/100

safety spring locking device



Ball valves RK-Proball KH 3T all sizes are also available with pneumatical, electrical or hydraulic actuators.

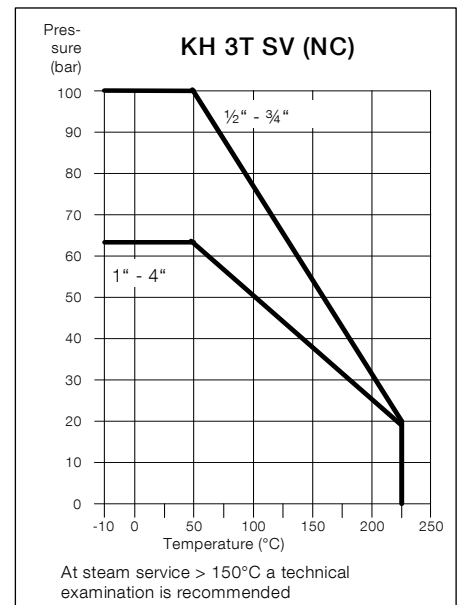
No.	Part	Material	Material
1	body	1.0619	1.4408
2	cap	1.0619	1.4408
3	ball		1.4408
4	seat		KFG
5	stem		1.4401
6	stop pin		1.4301
7	washer		KFG
8	stem packing		KF
9	hex. screw		A2-70
10	hex. nut		A2-70
11	thrust washer		1.4301
12	hex. nut		A2-70
13	lever		1.4301
14	insulation cover		Vinyl
15	plate spring		1.4310
16	locking plate		1.4301
17	antistatic element		1.4401
18	spring locking device		1.4301

Ball valve with extended butt weld ends
full bore
face to face dimensions acc. to
producers standard
butt weld ends acc. to EN 12627

Specification:

Three-piece ball valve, extended butt weld ends acc. to EN 12627, face to face dimensions acc. to producers standard, full bore, body material stainless steel (1.4408) or steel (1.0619), antistatic device, free of non ferrous metals, seat KFG, stem packing KF, disc spring loaded adjustable, top flange DIN EN ISO 5211, approved by PED, certified acc. to GERMAN clean air act VDI 2440, lever with safety spring locking device.

Marking: RK-Proball
Types: KH 3T SV (NC)-1.0619
KH 3T SV (NC)-1.4408



Ordering example:
KH 3T SV (NC), 2", PN 63, 1.4408,
safety spring locking device

Dimensions

DN mm	DN inch	PN	dimensions (mm)			top flange ISO 5211			Kv-value m ³ /h	torque Nm	weight kg		
			Ø Da	S	H	I	L	Ø A				B	
15	1/2	100	23.5	4.25	67	135	180	F04	42	M5	10	5	0.7
20	3/4	100	29.0	4.50	73	135	180	F04	42	M5	25	10	1.1
25	1	63	35.7	5.35	80	168	180	F05	50	M6	35	11	1.7
32	1 1/4	63	45.0	6.50	87	168	200	F05	50	M6	46	20	2.7
38	1 1/2	63	51.0	6.50	103	205	200	F05	50	M6	80	26	3.5
49	2	63	62.0	6.50	112	218	210	F07	70	M8	110	30	5.4
65	2 1/2	63	78.0	6.50	156	280	240	F07	70	M8	310	70	10.7
80	3	63	91.0	5.50	163	376	280	F10	102	M10	360	90	15.9
100	4	63	116.3	8.15	194	376	280	F10	102	M10	820	120	27.5

06/2016

Subject to modification.